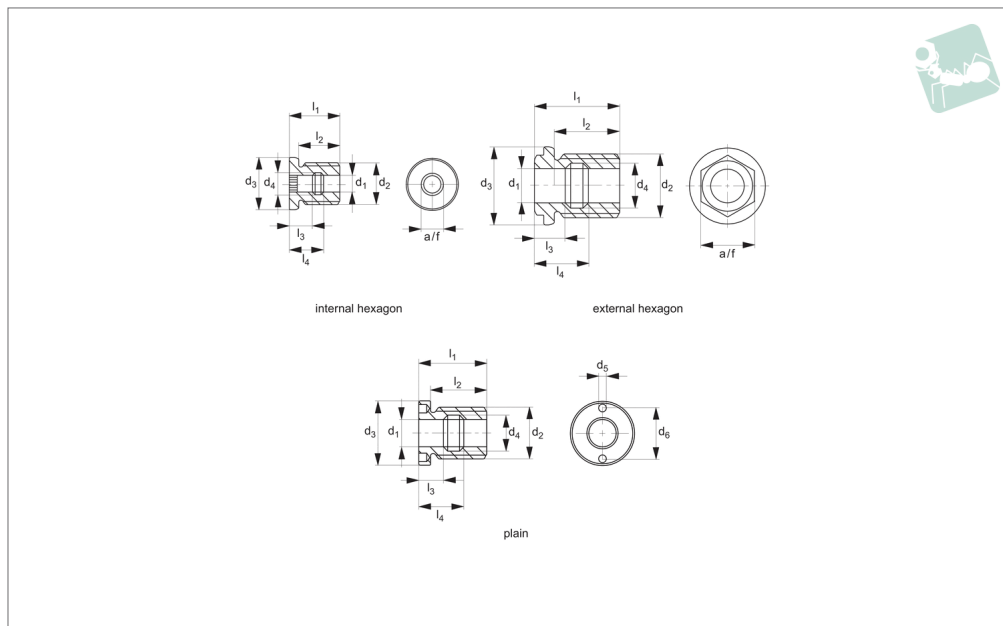




Locating Bushes for ball lock pins

Lanyards



LA1310

LANYARDS

Material

Body: stainless steel 1.4305. (AISI 303).

Technical Notes

For quick and safe location of single acting ball lock pins - especially in soft materials such as aluminium, or in thin walled

components.

Can be used from both sides. Optimised centering due to precision collar on bush.

Important Notes

l_5 and l_6 refer to depths of ball locating recess when bush is installed flange collar

up, or flange collar inverted (see diagram below).

Use pin face spanner with 5mm pin to install pin mount bushings.

Order No.	Type	d_1 tol. H11	d_2	d_3 tol. h9	d_4	d_5	d_6	Weight g
LA1310.M05-12-S	Int Hex	5	M12	18	6.0	-	-	15
LA1310.M06-12-S	Int Hex	6	M12	18	7.5	-	-	13
LA1310.M08-16-S	Int Hex	8	M16	22	10.0	-	-	29
LA1310.M10-24-S	Int Hex	10	M24	30	12.5	-	-	75
LA1310.M12-24-S	Int Hex	12	M24	30	15.0	-	-	66
LA1310.M16-30-S	Ext Hex	16	M30	36	19.5	-	-	124
LA1310.M20-36-S	Ext Hex	20	M36	45	25.5	-	-	208
LA1310.M25-42-S	Ext Hex	25	M42	50	32.0	-	-	415
LA1310.M16-31-S	Plain	16	M30	39	19.5	5.1	30	160
LA1310.M20-37-S	Plain	20	M36	43	25.5	5.1	30	257
LA1310.M25-43-S	Plain	25	M42	50	32.0	5.1	36	434

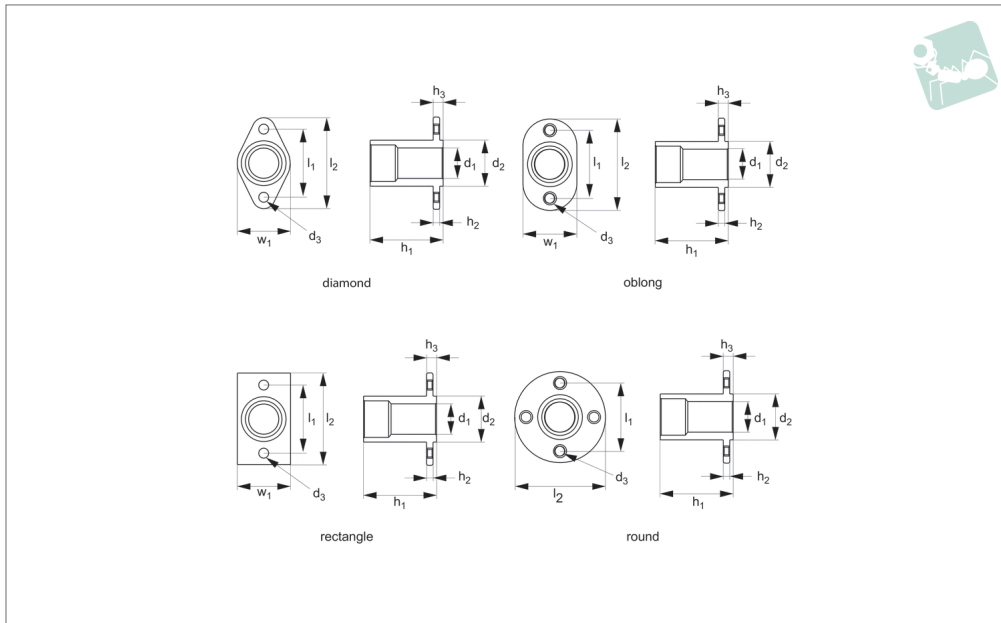
Order No.	l_1	l_2	l_3	l_4	l_5	l_6	A/F
LA1310.M05-12-S	19	15	9.0	13.0	5.1	9.0	5
LA1310.M06-12-S	19	15	9.4	13.0	5.6	8.8	6
LA1310.M08-16-S	25	20	12.0	17.0	7.3	11.7	8
LA1310.M10-24-S	29	24	13.5	19.5	8.9	14.1	10
LA1310.M12-24-S	29	24	14	20	9.6	14.4	12
LA1310.M16-30-S	39	29	15.5	23.5	6.1	12.8	24
LA1310.M20-36-S	49	38	17.5	31.5	7.7	19.3	30
LA1310.M25-42-S	65	50	26.5	38.5	13.3	21.8	36
LA1310.M16-31-S	39	33	15.5	23.5	10.4	16.6	-
LA1310.M20-37-S	49	42	17.5	31.5	11.9	23.1	-
LA1310.M25-43-S	65	57	26.5	38.5	13.3	21.8	-





Flange Bushings - Metric - for Quick stainless steel

Lanyards



LA1315

LANYARDS

Material

Stainless steel, AISI 303.

Technical Notes

Provide permanent and proper locating hole for quick release pins. For use in applications with soft/weak metals, or

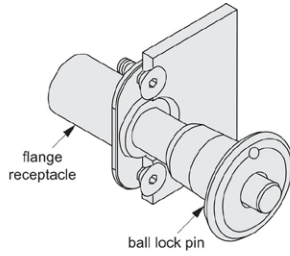
where no proper locking surface is available. Ideal for blind hole applications, as pin will not protrude from base of bushing.

Mounted with screws, rivets or bolts.

Important Notes

Quick release pins must be inserted from flanged end. **When used, bushings reduce the usable or grip length of quick release pin. Refer to 'Grip length reduction' value in data table.

Order No.	Flange style	d ₁ pin dia. nom.	Grip length reduction	d ₂ ±0.13	d ₃	h ₁ +0.0 -0.13	h ₂ ±0.13	h ₃	l ₁ ±0.13	l ₂ ±0.25	w ±0.25
LA1315.M05-DI	Diamond	5	10	9.53	M4	16.51	1.52	1.52	25	31.75	15.88
LA1315.M06-DI	Diamond	6	10	9.53	M4	16.51	1.52	1.52	25	31.75	15.88
LA1315.M08-DI	Diamond	8	13	11.91	M4	19.89	1.52	1.52	25	31.75	15.88
LA1315.M10-DI	Diamond	10	15	14.29	M4	23.19	1.52	1.52	25	31.75	15.88
LA1315.M12-DI	Diamond	12	20	19.05	M5	30.35	2.54	1.52	29	38.10	22.23
LA1315.M05-OB	Oblong	5	10	9.53	M4	16.51	1.52	1.52	25	31.75	15.88
LA1315.M06-OB	Oblong	6	10	9.53	M4	16.51	1.52	1.52	25	31.75	15.88
LA1315.M08-OB	Oblong	8	13	11.91	M4	19.89	1.52	1.52	25	31.75	15.88
LA1315.M10-OB	Oblong	10	15	14.29	M4	23.13	1.52	1.52	25	31.75	15.88
LA1315.M12-OB	Oblong	12	20	19.05	M5	30.35	2.54	1.52	29	38.10	22.23
LA1315.M05-RE	Rectangle	5	10	9.53	M4	16.51	1.52	1.52	25	31.75	15.88
LA1315.M06-RE	Rectangle	6	10	9.53	M4	16.51	1.52	1.52	25	31.75	15.88
LA1315.M08-RE	Rectangle	8	13	11.91	M4	19.89	1.52	1.52	25	31.75	15.88
LA1315.M10-RE	Rectangle	10	15	14.29	M4	23.13	1.52	1.52	25	31.75	15.88
LA1315.M05-RO	Round	5	10	9.53	M4	16.51	1.52	1.52	25	31.75	-
LA1315.M06-RO	Round	6	10	9.53	M4	16.51	1.52	1.52	25	31.75	-
LA1315.M08-RO	Round	8	13	11.91	M4	19.89	1.52	1.52	25	31.75	-
LA1315.M10-RO	Round	10	15	14.29	M4	23.13	1.52	1.52	25	31.75	-
LA1315.M12-RO	Round	12	20	19.05	M5	30.35	2.54	1.52	29	38.10	-

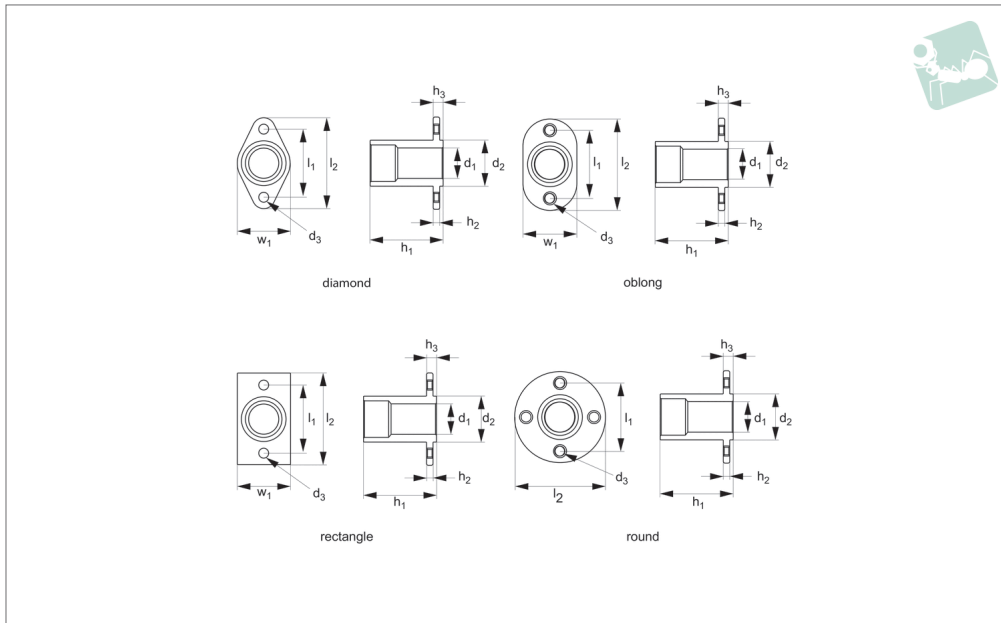


flange receptacles are used to give a permanent mounting hole in materials where the balls have nothing to lock against.



Flange Bushings - Inch - for Quick stainless steel

Lanyards



LA1320

LANYARDS

Material

Stainless steel, AISI 303.

Technical Notes

Provide permanent and proper locating hole for quick release pins. For use in applications with soft/weak metals, or

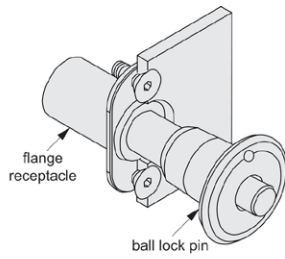
where no proper locking surface is available. Ideal for blind hole applications, as pin will not protrude from base of bushing.

Mounted with screws, rivets or bolts.

Important Notes

Quick release pins must be inserted from flanged end. **When used, bushings reduce the usable or grip length of quick release pin. Refer to 'Grip length reduction' value in data table.

Order No.	Flange style	d ₁ pin dia. nom.	Grip length reduction	d ₂ ±0.005	d ₃	h ₁ +0.000 -0.005	h ₂ ±0.005	h ₃	l ₁ ±0.005	l ₂ ±0.010	w
LA1320.I18-DI	Diamond	3/16	,375	,375	6-32	,650	,060	,06	1000	1.25	,625
LA1320.I25-DI	Diamond	1/4	,375	,375	6-32	,650	,060	,06	1000	1.25	,625
LA1320.I31-DI	Diamond	5/16	,500	,469	6-32	,783	,060	,06	1000	1.25	,625
LA1320.I37-DI	Diamond	3/8	,562	,562	6-32	,913	,060	,06	1000	1.25	,625
LA1320.I50-DI	Diamond	1/2	,750	,750	10-32	1195	,100	,06	1125	1.50	,875
LA1320.I18-OB	Oblong	3/16	,375	,375	6-32	,650	,060	,06	1000	1.25	,625
LA1320.I25-OB	Oblong	1/4	,375	,375	6-32	,650	,060	,06	1000	1.25	,625
LA1320.I31-OB	Oblong	5/16	,500	,469	6-32	,783	,060	,06	1000	1.25	,625
LA1320.I37-OB	Oblong	3/8	,562	,562	6-32	,913	,060	,06	1000	1.25	,625
LA1320.I50-OB	Oblong	1/2	,750	,750	10-32	1195	,100	,06	1125	1.50	,875
LA1320.I18-RE	Rectangle	3/16	,375	,375	6-32	,650	,060	,06	1000	1.25	,625
LA1320.I25-RE	Rectangle	1/4	,375	,375	6-32	,650	,060	,06	1000	1.25	,625
LA1320.I31-RE	Rectangle	5/16	,500	,469	6-32	,783	,060	,06	1000	1.25	,625
LA1320.I37-RE	Rectangle	3/8	,562	,562	6-32	,913	,060	,06	1000	1.25	,625
LA1320.I18-RO	Round	3/16	,375	,375	6-32	,650	,060	,06	1000	1.25	-
LA1320.I25-RO	Round	1/4	,375	,375	6-32	,650	,060	,06	1000	1.25	-
LA1320.I31-RO	Round	5/16	,500	,469	6-32	,783	,060	,06	1000	1.25	-
LA1320.I37-RO	Round	3/8	,562	,562	6-32	,913	,060	,06	1000	1.25	-
LA1320.I50-RO	Round	1/2	,750	,750	10-32	1195	,100	,06	1125	1.50	-



flange receptacles are used to give a permanent mounting hole in materials where the balls have nothing to lock against.