

LP1360

TURNBUCKLES

Material

Steel (1.0037), zinc-plated.

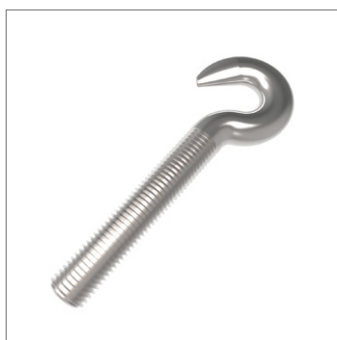
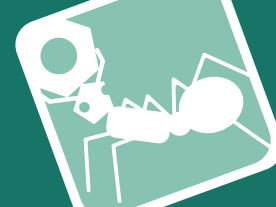
Hot dip galvanized version, available on request providing increased protection

against corrosion. Please add -FZ for hot dip galvanized, e.g. LP1360.R006-FZ.

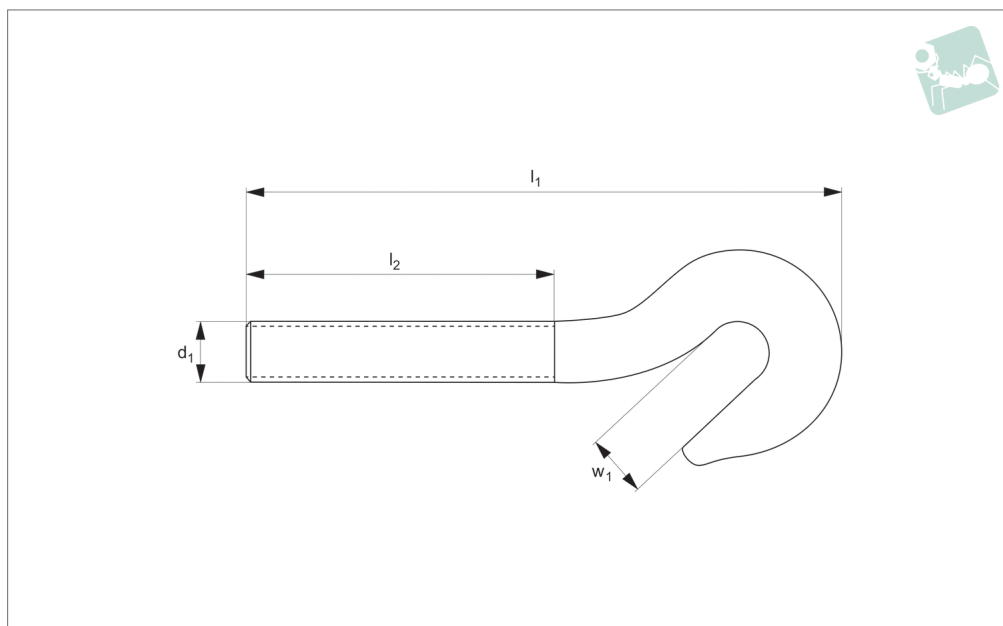
Important Notes

Turnbuckles are not to be used for lifting. Only suitable for use in tension.

Order No.	Thread hand	d ₁	d ₂	l ₁	l ₂	Weight kg
LP1360.R006	Right	M 6	10	74	50	0.015
LP1360.R008	Right	M 8	11	80	52	0.030
LP1360.R010	Right	M10	15	95	59	0.050
LP1360.R012	Right	M12	17	107	66	0.085
LP1360.R014	Right	M14	18	158	85	0.130
LP1360.R016	Right	M16	22	146	85	0.210
LP1360.R020	Right	M20	24	170	100	0.380
LP1360.R022	Right	M22	30	203	123	0.580
LP1360.R024	Right	M24	33	213	134	0.830
LP1360.R030	Right	M30	39	255	150	1.400
LP1360.R036	Right	M36	37	260	150	2.180
LP1360.R042	Right	M42	48	285	165	3.190
LP1360.R048	Right	M48	58	335	185	4.970
LP1360.L006	Left	M 6	10	74	50	0.015
LP1360.L008	Left	M 8	11	80	52	0.030
LP1360.L010	Left	M10	15	95	59	0.050
LP1360.L012	Left	M12	17	107	66	0.085
LP1360.L014	Left	M14	18	158	85	0.130
LP1360.L016	Left	M16	22	146	85	0.210
LP1360.L020	Left	M20	24	170	100	0.380
LP1360.L022	Left	M22	30	203	123	0.580
LP1360.L024	Left	M24	33	213	134	0.830
LP1360.L030	Left	M30	39	255	150	1.400
LP1360.L036	Left	M36	37	260	150	2.180
LP1360.L042	Left	M42	48	285	165	3.190
LP1360.L048	Left	M48	58	335	185	4.970



LP1362



Material

Steel (1.0037).

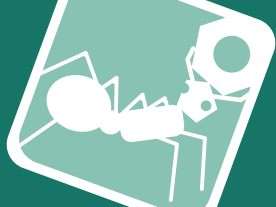
Hot dip galvanized version, available on request providing increased protection

against corrosion. Please add -FZ for hot dip galvanized, e.g. LP1362.R006-FZ.

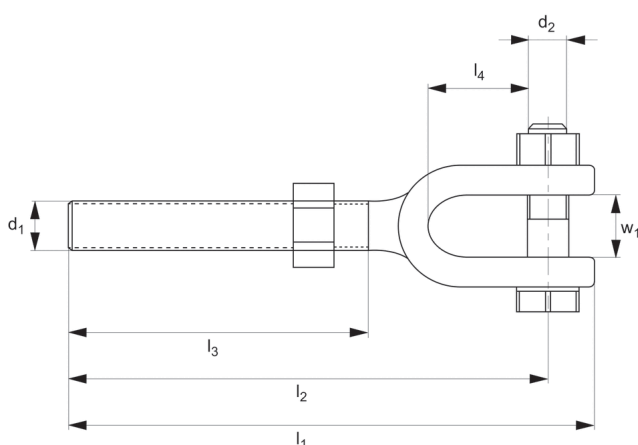
Important Notes

Turnbuckles are not to be used for lifting. Only suitable for use in tension.

Order No.	Thread hand	d ₁	l ₁	l ₂	w ₁	S.W.L. kg	Weight kg
LP1362.R006	Right	M 6	77.0	50	9.5	75	0.016
LP1362.R008	Right	M 8	98.0	60	11.0	165	0.034
LP1362.R010	Right	M10	116.5	73	14.0	235	0.060
LP1362.R012	Right	M12	146.0	90	18.0	320	0.113
LP1362.R014	Right	M14	140.0	80	16.0	420	0.170
LP1362.R016	Right	M16	165.0	100	19.0	530	0.275
LP1362.R020	Right	M20	180.0	105	21.0	730	0.440
LP1362.R022	Right	M22	215.0	120	26.0	1120	0.685
LP1362.R024	Right	M24	225.0	135	29.0	1550	0.765
LP1362.R030	Right	M30	225.0	140	31.0	2240	1.325
LP1362.R036	Right	M36	300.0	170	35.0	3530	2.285
LP1362.L006	Left	M 6	77.0	50	9.5	75	0.016
LP1362.L008	Left	M 8	98.0	60	11.0	165	0.034
LP1362.L010	Left	M10	116.5	73	14.0	235	0.060
LP1362.L012	Left	M12	146.0	90	18.0	320	0.113
LP1362.L014	Left	M14	140.0	80	16.0	420	0.170
LP1362.L016	Left	M16	165.0	100	19.0	530	0.275
LP1362.L020	Left	M20	180.0	105	21.0	730	0.440
LP1362.L022	Left	M22	215.0	120	26.0	1120	0.685
LP1362.L024	Left	M24	225.0	135	29.0	1550	0.765
LP1362.L030	Left	M30	225.0	140	31.0	2240	1.325
LP1362.L036	Left	M36	300.0	170	35.0	3530	2.285



LP1364



Material

Steel (C45, 1.0503), zinc-plated.
Hot dip galvanized version, above M12 available on request providing increased protection against corrosion. Please add -

FZ for hot dip galvanized, e.g. LP1364.
R008-FZ.

Only suitable for use in tension.

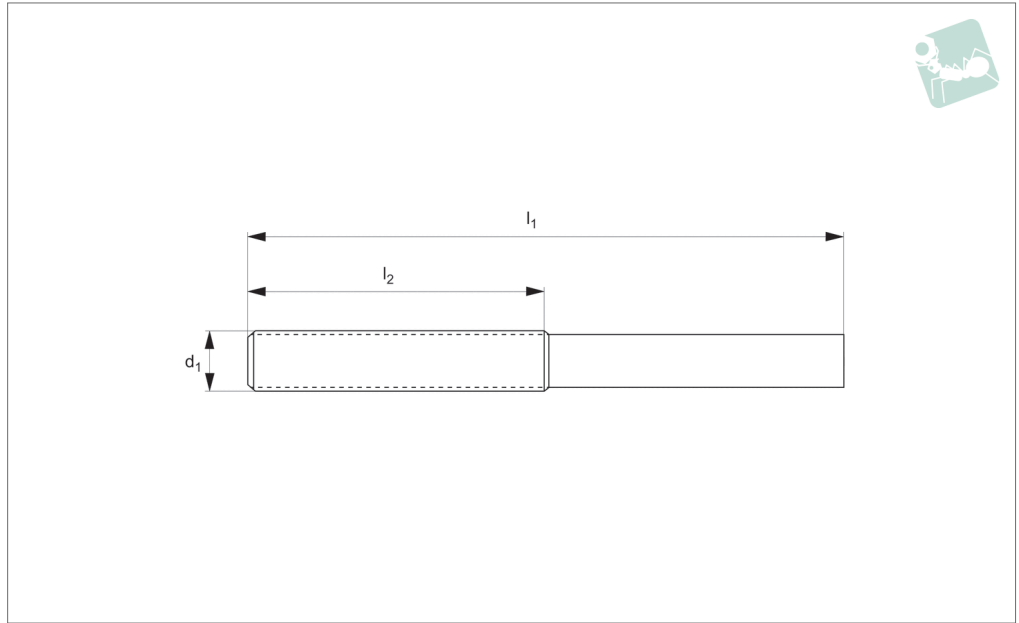
Important Notes

Turnbuckles are not to be used for lifting.

Order No.	Thread hand	d ₁	d ₂	l ₁	l ₂	l ₃	l ₄	w ₁	Weight kg
LP1364.R008	Right	M 8	8.5	125	116	68	28.75	9.0	0.095
LP1364.R010	Right	M10	8.5	139	130	82	29.25	10.7	0.132
LP1364.R012	Right	M12	10.5	160	150	90	44.75	15.5	0.215
LP1364.R016	Right	M16	12.5	186	172	102	45.25	20.0	0.405
LP1364.R020	Right	M20	17.0	205	185	115	59.50	23.5	0.812
LP1364.R024	Right	M24	20.5	240	215	125	62.75	29.0	1.395
LP1364.R030	Right	M30	25.0	290	255	150	89.50	34.0	2.690
LP1364.L008	Left	M 8	8.5	125	116	68	28.75	9.0	0.095
LP1364.L010	Left	M10	8.5	139	130	82	29.25	10.7	0.132
LP1364.L012	Left	M12	10.5	160	150	90	44.75	15.5	0.215
LP1364.L016	Left	M16	12.5	186	172	102	45.25	20.0	0.405
LP1364.L020	Left	M20	17.0	205	185	115	59.50	23.5	0.812
LP1364.L024	Left	M24	20.5	240	215	125	62.75	29.0	1.395
LP1364.L030	Left	M30	25.0	290	255	150	89.5	34.0	2.690



LP1366



TURNBUCKLES

Material

Steel (1.0037 up to M36, above M36 1.0052).

Hot dip galvanized version, available on request providing increased protection

against corrosion. Please add -FZ for hot dip galvanized, e.g. LP1366.R006-FZ.

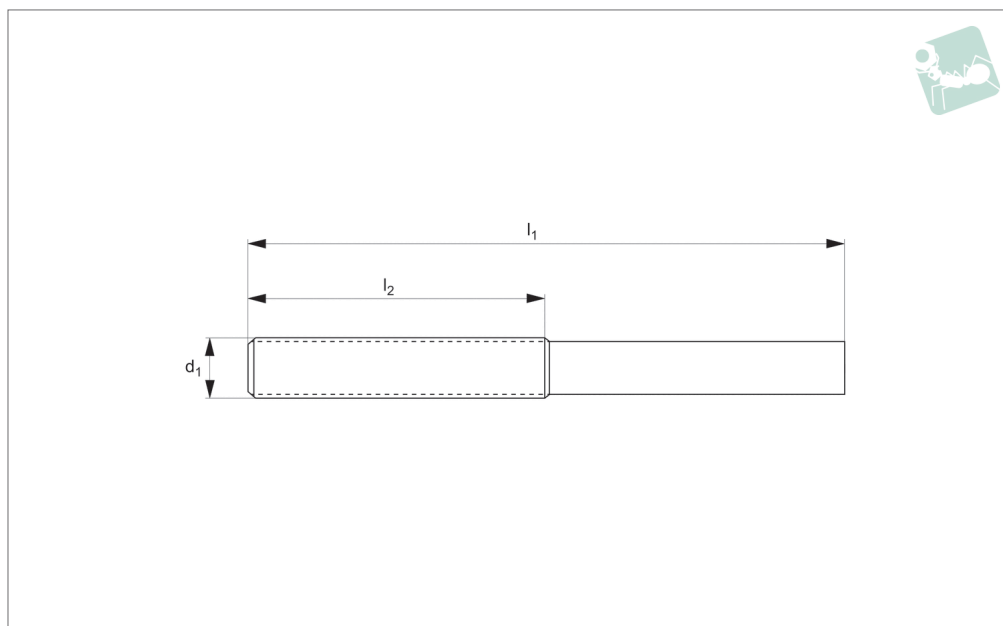
Technical Notes

To DIN 34828.

Important Notes

Turnbuckles are not to be used for lifting. Only suitable for use in tension.

Order No.	Thread hand	d	l_1	l_2	S.W.L. kg	Weight kg
LP1366.R006	Right	M 6	120	60	0.02	0.02
LP1366.R008	Right	M 8	120	65	0.04	0.04
LP1366.R010	Right	M10	150	75	0.07	0.07
LP1366.R012	Right	M12	150	75	0.11	0.11
LP1366.R014	Right	M14	165	80	0.15	0.15
LP1366.R016	Right	M16	200	100	0.26	0.26
LP1366.R020	Right	M20	200	120	0.44	0.44
LP1366.R024	Right	M24	260	150	0.76	0.76
LP1366.R030	Right	M30	260	160	1.20	1.20
LP1366.R036	Right	M36	300	180	2.10	2.10
LP1366.R042	Right	M42	350	200	3.15	3.15
LP1366.R048	Right	M48	380	220	4.60	4.60
LP1366.R056	Right	M56	380	230	6.28	6.28
LP1366.R064	Right	M64	425	300	9.16	9.16
LP1366.R072	Right	M72	400	270	4.60	4.60
LP1366.L006	Left	M 6	120	60	0.02	0.02
LP1366.L008	Left	M 8	120	65	0.04	0.04
LP1366.L010	Left	M10	150	75	0.07	0.07
LP1366.L012	Left	M12	150	75	0.11	0.11
LP1366.L014	Left	M14	165	80	0.15	0.15
LP1366.L016	Left	M16	200	100	0.26	0.26
LP1366.L020	Left	M20	200	120	0.44	0.44
LP1366.L024	Left	M24	260	150	0.76	0.76
LP1366.L030	Left	M30	260	160	1.20	1.20
LP1366.L036	Left	M36	300	180	2.10	2.10
LP1366.L042	Left	M42	350	200	3.15	3.15
LP1366.L048	Left	M48	380	220	4.60	4.60
LP1366.L056	Left	M56	380	230	6.28	6.28
LP1366.L064	Left	M64	425	300	9.16	9.16
LP1366.L072	Left	M72	400	270	4.60	4.60



LP1368

TURNBUCKLES

Material

Stainless steel (A4).

Technical Notes

To DIN 34828.

Important Notes

**Turnbuckles are not to be used for lifting.
Only suitable for use in tension.**

Order No.	Thread hand	d_1	l_1	l_2	Weight kg
LP1368.R006	Right	M 6	120	60	0.02
LP1368.R008	Right	M 8	120	65	0.04
LP1368.R010	Right	M10	150	75	0.07
LP1368.R012	Right	M12	150	75	0.11
LP1368.R014	Right	M14	165	80	0.15
LP1368.R016	Right	M16	200	100	0.26
LP1368.R020	Right	M20	220	120	0.44
LP1368.R024	Right	M24	260	150	0.76
LP1368.R030	Right	M30	260	160	1.20
LP1368.R036	Right	M36	300	180	2.10
LP1368.L006	Left	M 6	120	60	0.02
LP1368.L008	Left	M 8	120	65	0.04
LP1368.L010	Left	M10	150	75	0.07
LP1368.L012	Left	M12	150	75	0.11
LP1368.L014	Left	M14	165	80	0.15
LP1368.L016	Left	M16	200	100	0.26
LP1368.L020	Left	M20	220	120	0.44
LP1368.L024	Left	M24	260	150	0.76
LP1368.L030	Left	M30	260	160	1.20
LP1368.L036	Left	M36	300	180	2.10